



# Martin University Indianapolis, IN

# Fire Safety

Date 011311 v1

# Response to Fire or possible Fire

1. If you smell smoke or burning odor locate the nearest fire alarm and pull it.
2. If you can, turn off the gas in your area.
3. If you know how to use the fire extinguisher in the area try use it on the fire but be careful. If not leave the area.
4. By all possible means do not let the fire come between you and an exit.
5. As you leave the building, make sure no one is left behind. Close the doors so that the fire is contained.
6. After leaving the building contact **Security** or **Dial 911** to report where the fire is located. Once Police and Fire departments arrive help direct them to the fire location.

# Response to Fire Alarm Sound

1. Close doors as you leave this will slow the spread of fire and smoke.
2. Do not hesitate leaving the building, but leave in a controlled manner immediately. Please do not push or shove.
3. After leaving the building make sure you are at least 100 feet away from it.
4. Meet at a location everyone is familiar with and account for all unit members.
5. Only return to the building after it cleared by the fire department or security staff. After the alarm stops do not assume it is okay to enter the building.

# Fire Exits

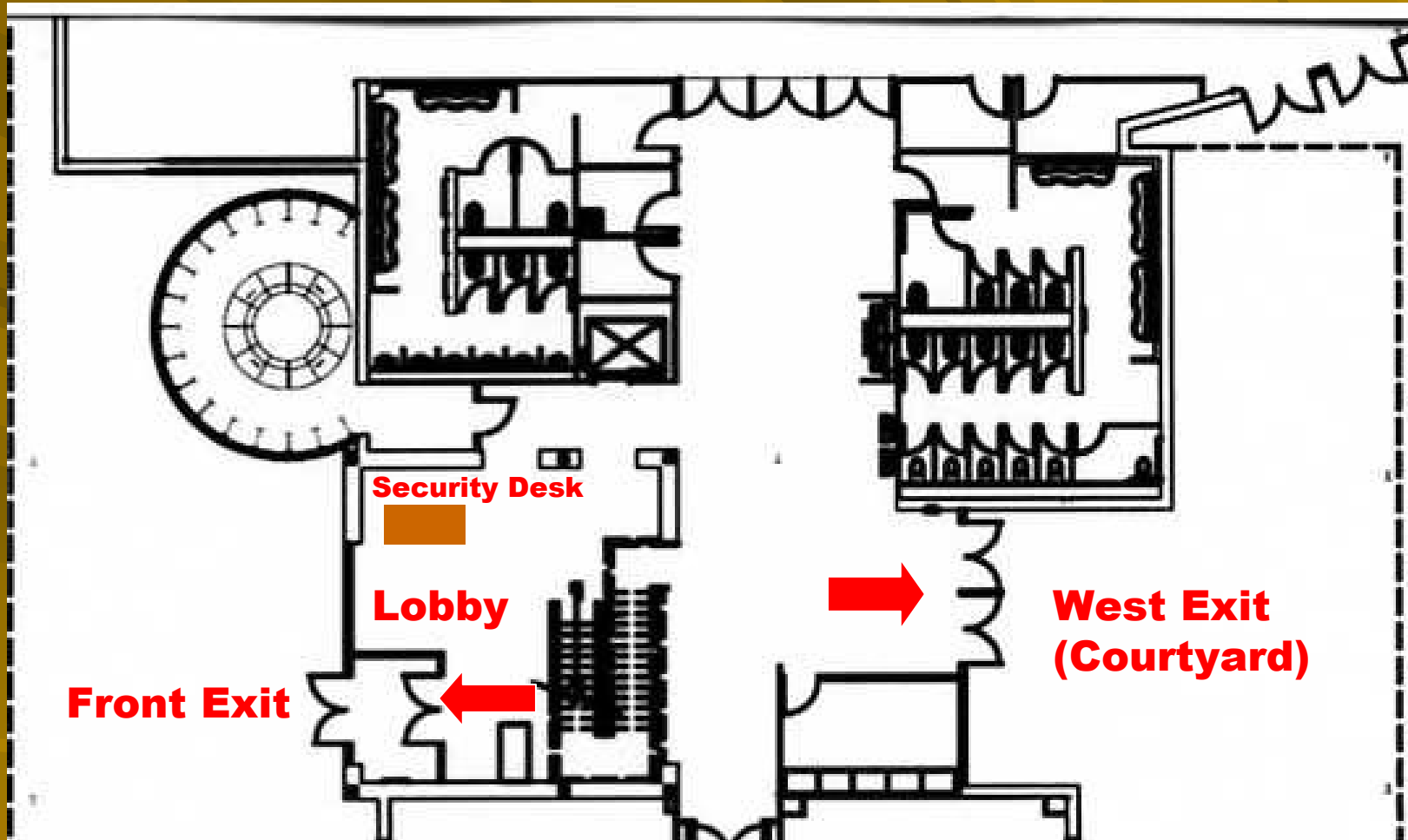
1. Close doors as you leave this will slow the spread of fire and smoke.
2. Do not hesitate leaving the building, but leave in a controlled manner immediately. Please do not push or shove.
3. After leaving the building make sure you are at least 100 feet away from it.
4. Meet at a location everyone is familiar with and account for all unit members.
5. Only return to the building after it cleared by the fire department or security staff. After the alarm stops do not assume it is okay to enter the building.

# Fire Exits

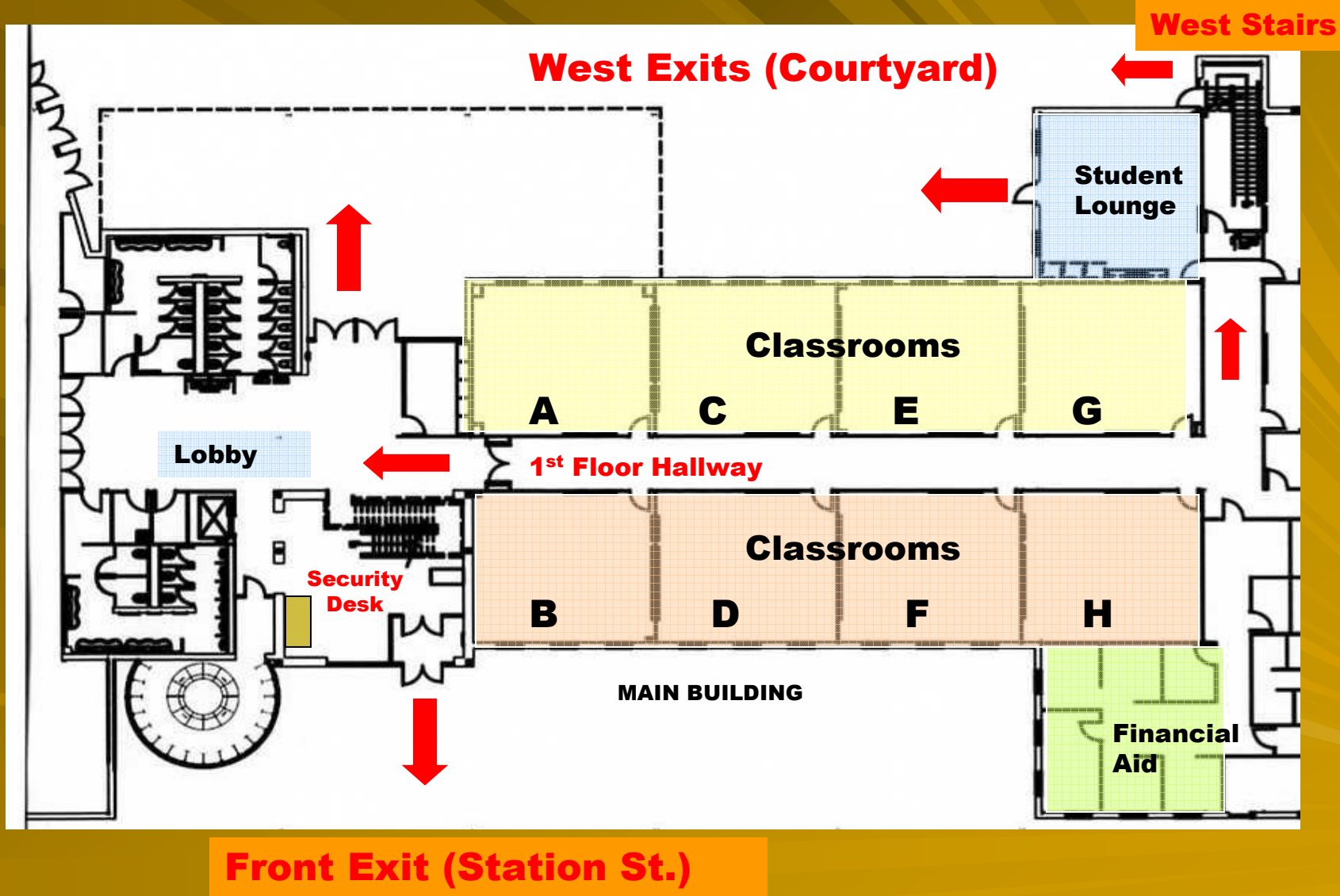
**1. Get away    2. Go to Assembly Area**



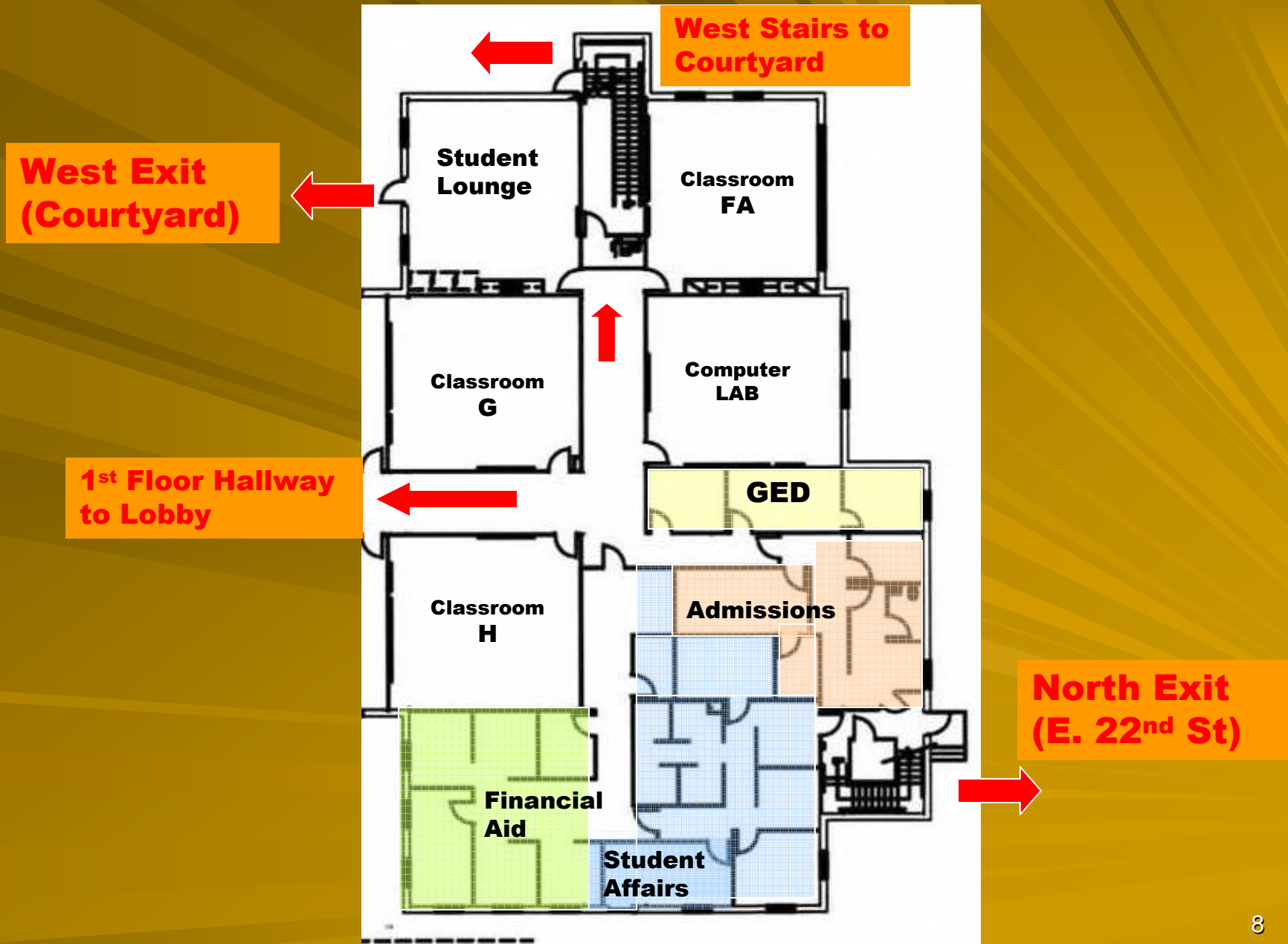
# Fire Exits



# 1<sup>st</sup> Floor Fire Exits - (Main Bldg.)



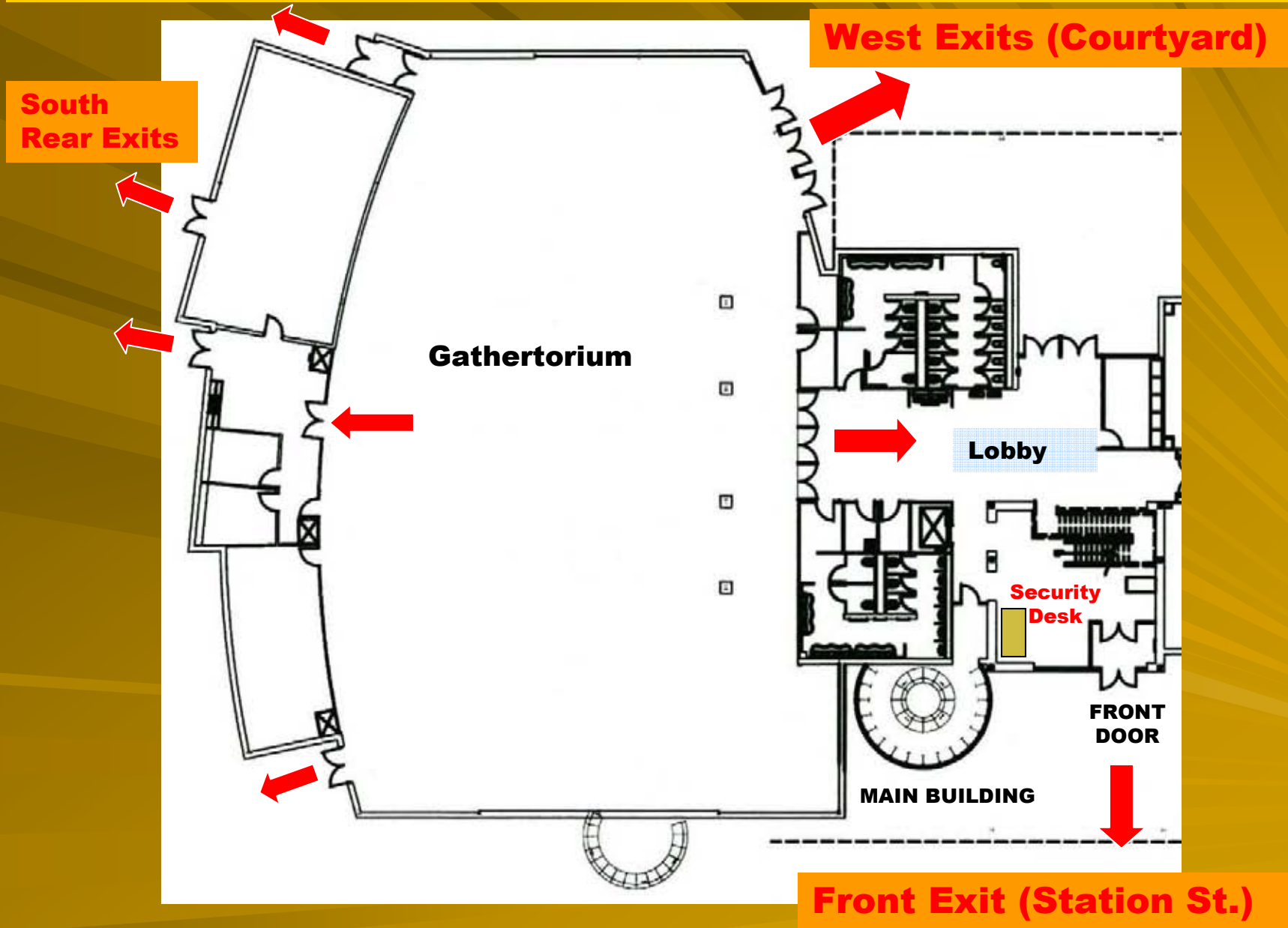
# 1<sup>st</sup> Floor Fire Exits - (Main Bldg.)



# 1<sup>st</sup> Floor Fire Exit - (Admin. Bldg.)



# Gathertorium Fire Exits - (Main Bldg.)



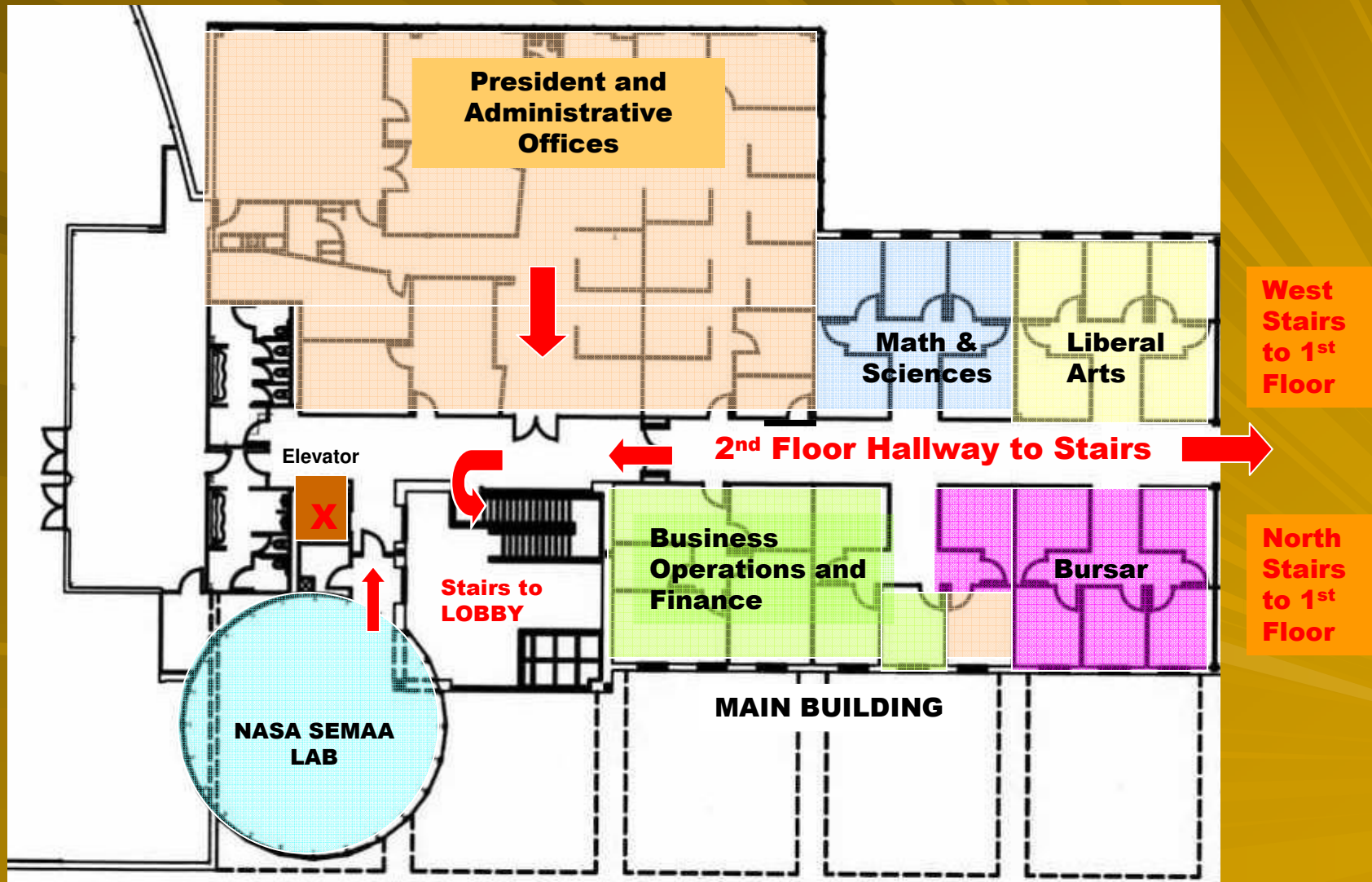
# Fire Exit – Courtyard (Admin. Bldg.)



# Gathertorium Fire Exits - (Admin. Bldg.)

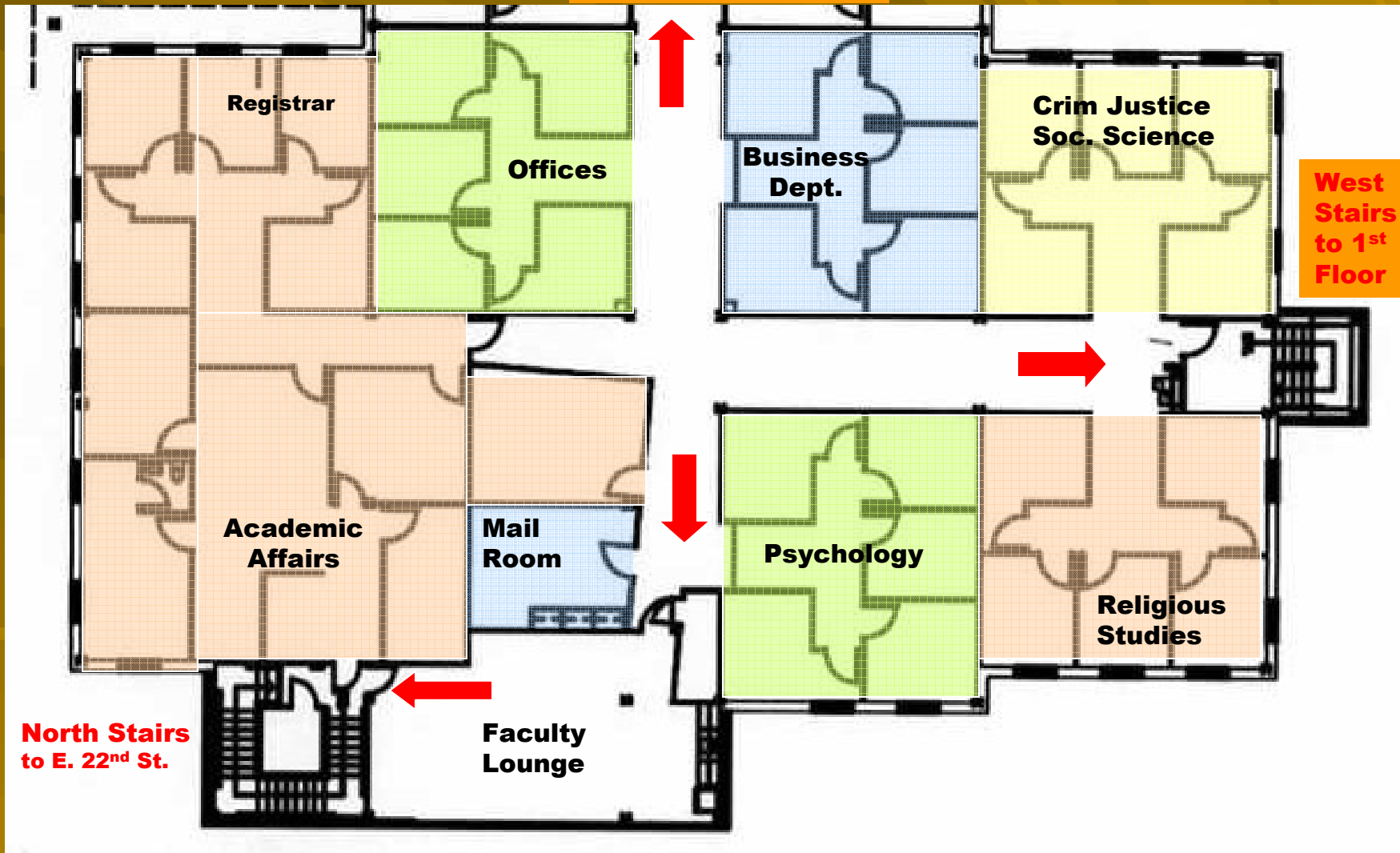


# 2<sup>nd</sup> Floor Fire Exits (Admin. Bldg.)



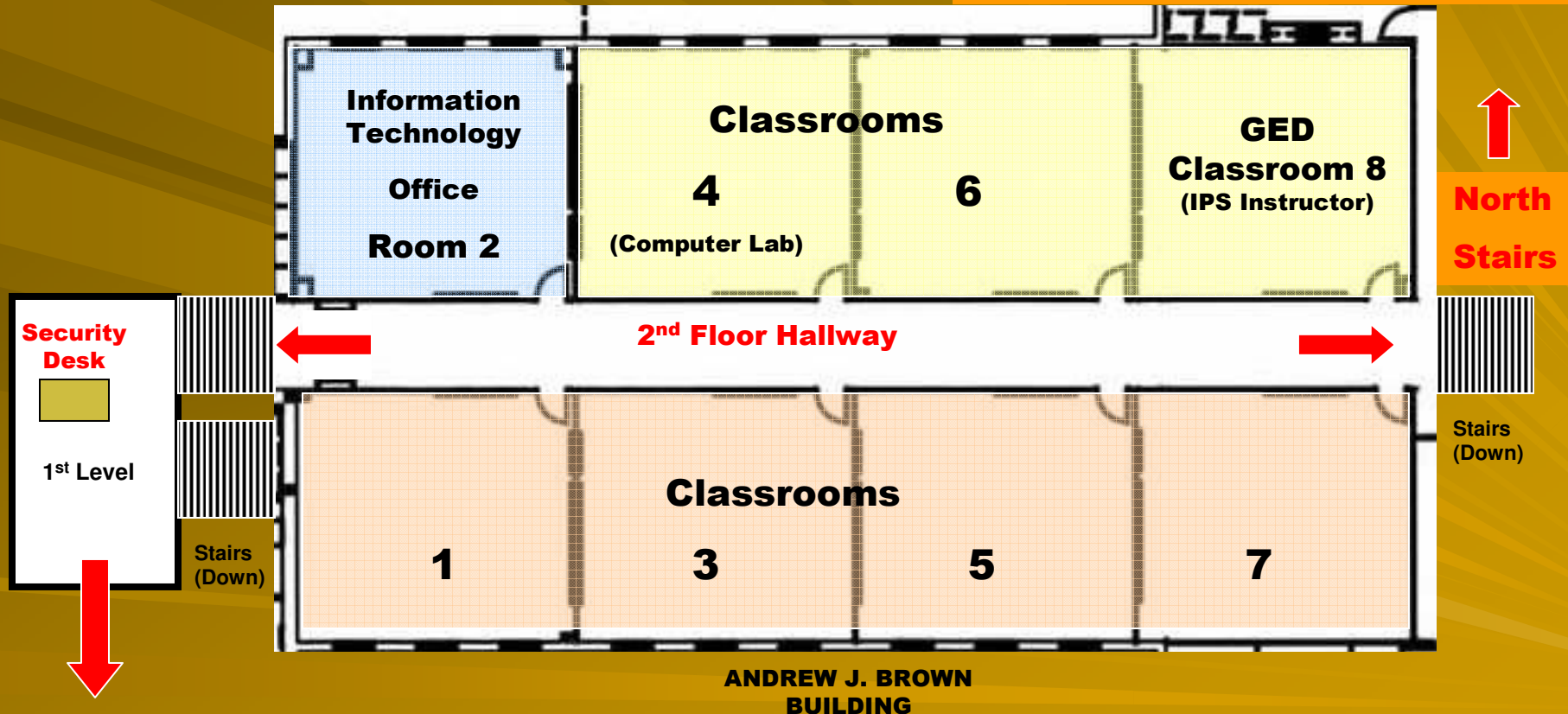
# 2<sup>nd</sup> Floor Fire Exits - (Main Bldg.)

2<sup>nd</sup> Floor Hallway  
to Center Stairs



# 2<sup>ND</sup> Floor Fire Exits - (AJ Brown Bldg.)

West Exit (Avondale Place)



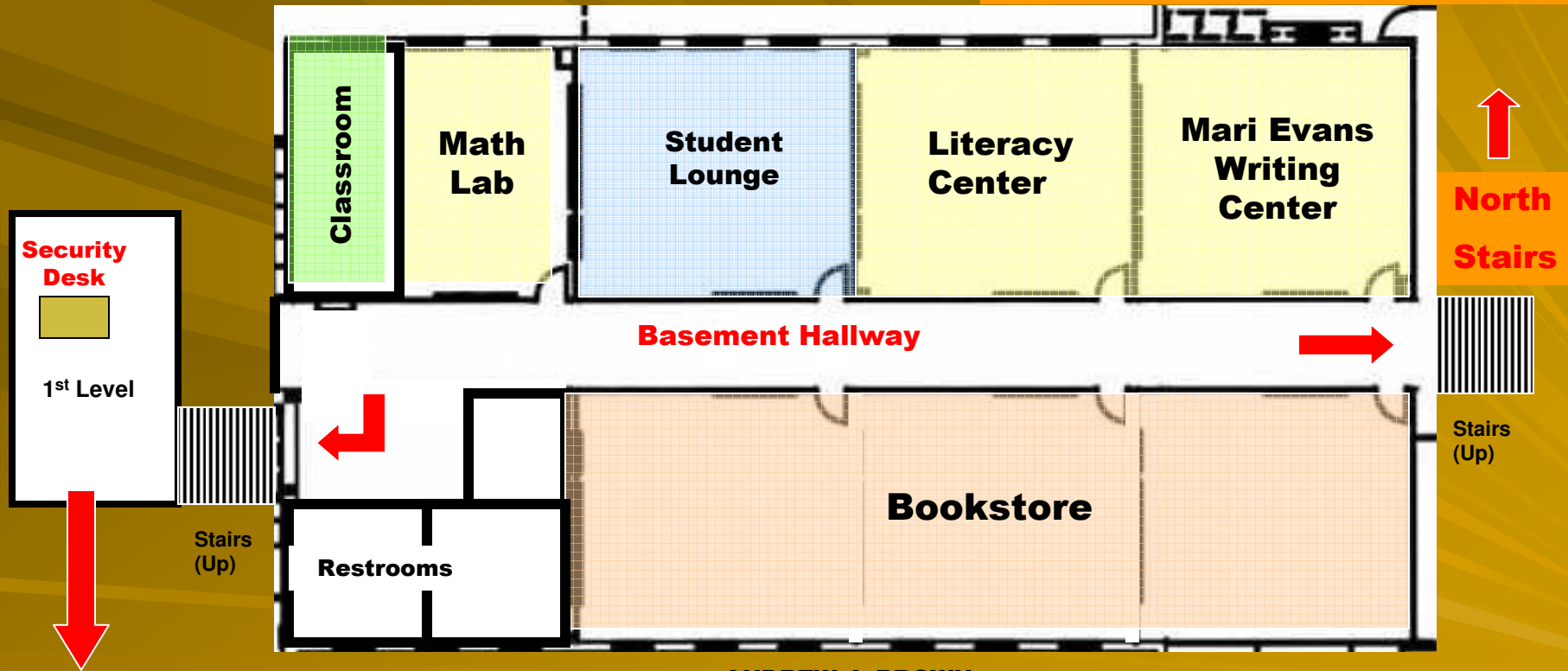
East Exit (Courtyard)

ANDREW J. BROWN  
BUILDING

# Basement Fire Exits

(AJ Brown Bldg.)

West Exit (Avondale Place)



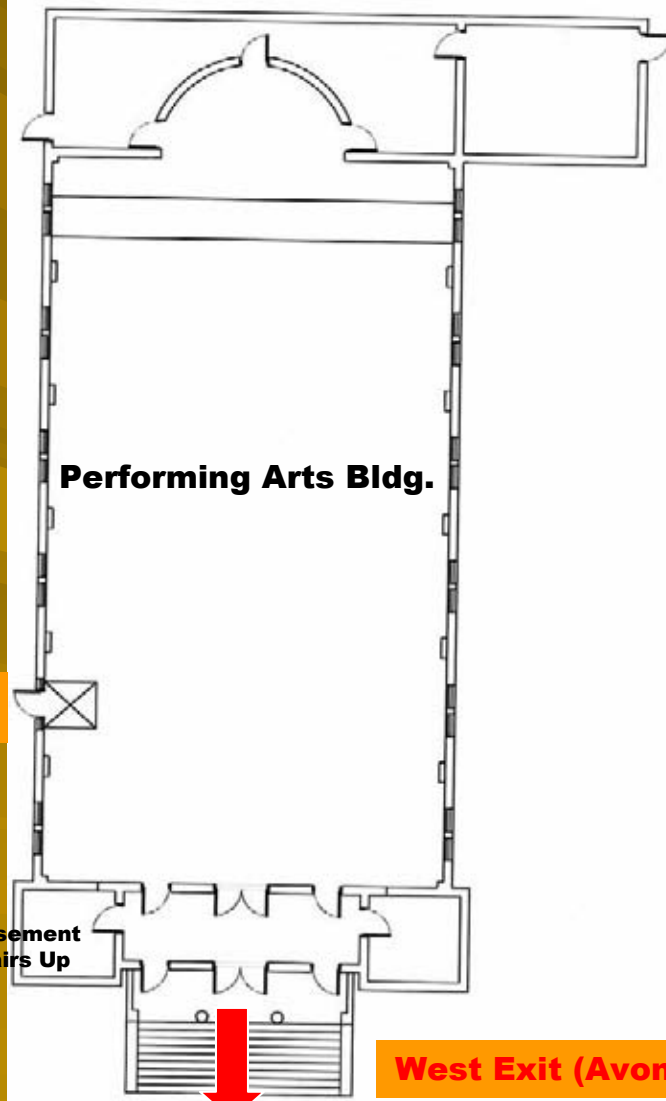
East Exit (Courtyard)

ANDREW J. BROWN  
BUILDING

# 1<sup>st</sup> Floor Fire Exits

## Church Bldg. (Performing Arts Bldg.)

North Exit  
E. 22<sup>nd</sup> St.



South Exit  
(Courtyard)

Basement  
Stairs Up

Basement  
Elevator

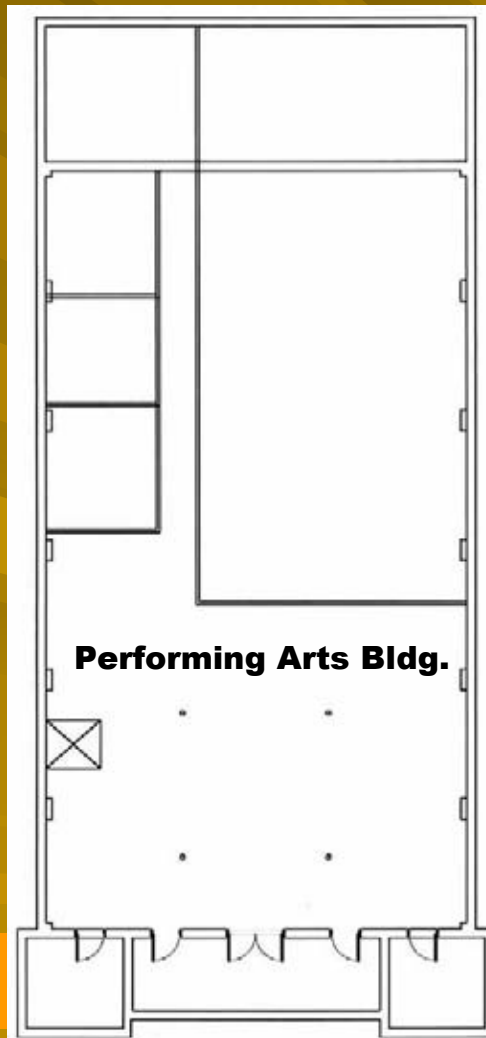
Performing Arts Bldg.

West Exit (Avondale Place)



# 2<sup>nd</sup> Floor Fire Exits

## Church Bldg. (Performing Arts Bldg.)



**North Stairs Exit to 1<sup>st</sup> Floor  
(Avondale Place)**

**South Stairs Exit to 1<sup>st</sup> Floor  
(Avondale Place)**

# **Fire Exit (Street view)**

## **Church Bldg. and AJ Brown Bldg.**



**North Exit AJ Brown Bldg.**

**West Exit (Avondale Place)**

**Performing Arts Bldg.**

# Case of Fire - Pull Alarm *(Horns will sound)*

